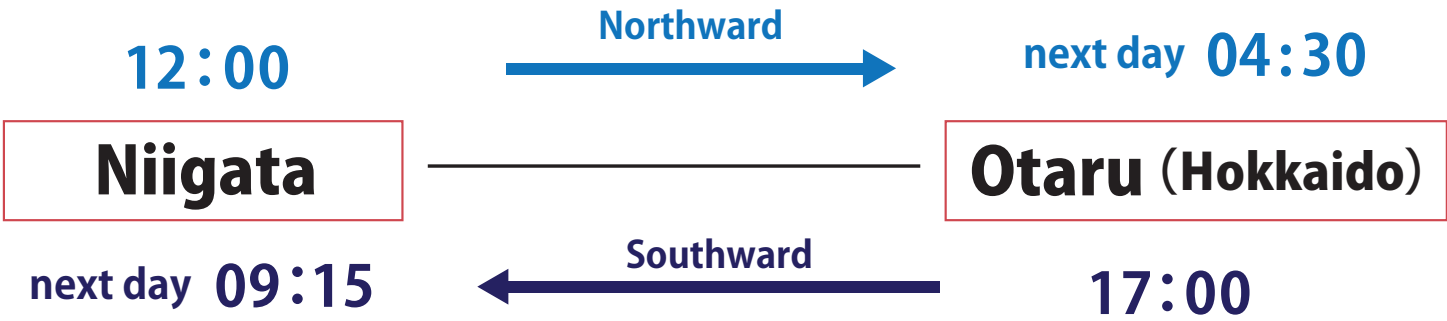


# Niigata ~ Otaru



## Route & Timetable



## Fares & Charges

Period A	Northward	January 1st, 2024 - April 25th, May 7th-31th
	Southward	
Period B	Northward	April 26th, 2024 - May 3th, May 6th
	Southward	
Period C	Northward	May 4 th 、 May 5th
	Southward	

### Passenger fares(Yen)

Cabin	Tourist C	Tourist A	Tourist S	State room A (inside)	State room A (outside)	Deluxe room A	Suite room
PeriodA	¥7,500	¥9,900	¥11,500	¥15,900	¥17,000	¥24,100	¥43,100 ※
PeriodB	¥8,200	¥10,600	¥13,800	¥18,400	¥19,600	¥27,200	¥46,400 ※
PeriodC	¥11,800	¥15,300	¥18,600	¥25,400	¥27,100	¥34,300	¥47,500 ※

※Including meals while onboard

- In Period A, a room for 4 people can't be used by only one person.
- The fare for children is half of the adult fare. An infant is free of charge if he or she sleeps together with an adult.  
In the case there are two or more infants per an adult, it costs child charge for them.

### Passenger Car Fares [Yen] \*Including a driver's passenger fare (basic fare)

Cabin	Less than 3m	Less than 4m	Less than 5m	Less than 6m
PeriodA	¥19,400	¥21,700	¥24,500	¥29,200
PeriodB	¥20,600	¥23,300	¥26,700	¥32,600
PeriodC	¥25,700	¥29,200	¥33,200	¥40,300

### Bicycle (Including a folding bicycle)

Period A	¥2,000	PeriodB	¥2,100	PeriodC	¥2,200
----------	--------	---------	--------	---------	--------

Sometimes, fares and schedule might change.

# February Sailing Schedule

2024. 2. 1 ~ 2024. 2. 29  
( Plan )

	Departure	time	Arrival	time		note	1	2	3	4	5	6	7	8	9	10	11	12	13	14	15	16	17	18	19	20	21	22	23	24	25	26	27	28	29
							Thu	Fri	Sat	Sun	Mon	Tue	Wed	Thu	Fri	Sat	Sun	Mon	Tue	Wed	Thu	Fri	Sat	Sun	Mon	Tue	Wed	Thu	Fri	Sat	Sun	Mon	Tue	Wed	Thu
North ward	MAIZURU	23:50	OTARU	next day	20:45		○				○		○		○				○		○				○		○					○		○	
		23:50	TOMAKOMAI-HIGASHI	next day	20:30													○	○										○						
	TSURUGA	23:55	TOMAKOMAI-HIGASHI	next day	20:30	direct route	○	○	○	○	○	○	○	○	○	○			○	○	○	○	○	○	○	○	○	○	○	○	○	○	○	○	○
			NIIGATA		21:30	indirect route																													
		9:30	AKITA	next day	5:05					○																									
			TOMAKOMAI-HIGASHI	next day	16:45																														
	NIIGATA	12:00	OTARU	next day	4:30	direct route	○	○	○	○		○	○	○	○	○	○		○	○	○	○		○			○		○				○		
		12:00	TOMAKOMAI-HIGASHI	next day	4:30	direct route																	○				○		○				○		○
		22:30	AKITA	next day	5:05	indirect route		○				○		○		○			○		○					○		○		○			○		○
		TOMAKOMAI-HIGASHI	next day	16:45																															
	AKITA	6:15	TOMAKOMAI-HIGASHI		16:45		○		○			○		○		○			○		○		○				○		○				○		○

	Departure	time	Arrival	time		note	1	2	3	4	5	6	7	8	9	10	11	12	13	14	15	16	17	18	19	20	21	22	23	24	25	26	27	28	29
							Thu	Fri	Sat	Sun	Mon	Tue	Wed	Thu	Fri	Sat	Sun	Mon	Tue	Wed	Thu	Fri	Sat	Sun	Mon	Tue	Wed	Thu	Fri	Sat	Sun	Mon	Tue	Wed	Th
South ward	OTARU	23:30	MAIZURU	next day	21:15		○		○			○		○		○				○		○			○		○					○		○	
		23:30	TSURUGA	next day	20:30																														
		17:00	NIIGATA	next day	9:15		○	○	○		○	○	○	○	○	○		○	○	○	○	○	○			○		○				○		○	
	TOMAKOMAI -HIGASHI	17:00	NIIGATA	next day	9:15	direct route																			○		○		○			○		○	
		23:30	MAIZURU	next day	21:15											○	○													○					
		23:30	TSURUGA	next day	20:30			○	○	○	○	○	○				○	○	○	○	○	○	○	○	○	○	○	○	○	○	○	○	○	○	
		19:30	AKITA	next day	7:35	indirect route	○		○			○		○		○			○		○		○			○		○			○		○		○
			NIIGATA	next day	15:30				○																										
			TSURUGA	two days later	5:30				○						-						○								○						
	AKITA	8:35	NIIGATA		15:30				○		○		○		○					○		○					○		○				○		
		TSURUGA	next day	5:30																															
	NIIGATA	16:30	TSURUGA	next day	5:30				○									-							○					○					

- “TOMAKOMAI-HIGASHI” is Tomakomai east Terminal , Syubun Pier.
- There are cases where the ship and sailing schedule may be unavoidably changed.

# March Sailing Schedule

2024. 3. 1 ~ 2024. 3. 31  
( Plan )

	Departure	time	Arrival	time		note	1	2	3	4	5	6	7	8	9	10	11	12	13	14	15	16	17	18	19	20	21	22	23	24	25	26	27	28	29	30	31	
							Fri	Sat	Sun	Mon	Tue	Wed	Thu	Fri	Sat	Sun	Mon	Tue	Wed	Thu	Fri	Sat	Sun	Mon	Tue	Wed	Thu	Fri	Sat	Sun	Mon	Tue	Wed	Thu	Fri	Sat	Sun	
North ward	MAIZURU	23:50	OTARU	next day	20:45		○			○		○		○			○		○		○			○			○				○		○		○			
		23:50	TOMAKOMAI -HIGASHI	next day	20:30																									○								
	TSURUGA	23:55	TOMAKOMAI -HIGASHI	next day	20:30	direct route	○	○	○	○	○	○	○	○	○	○	○	○	○	○	○	○	○	○	○	○	○	○	○	○	—	○	○	○	○	○	○	○
		9:30	NIIGATA		21:30	indirect route				○								○							○							○						
			AKITA	next day	5:05																											○						
			TOMAKOMAI -HIGASHI	next day	16:45																																	
		NIIGATA	12:00	OTARU	next day		4:30		○		○		○		○		○				○		○		○			○			○				○		○	
	12:00		TOMAKOMAI -HIGASHI	next day	4:30			○		○		○		○			○		○		○			○		○			○			○		○				
	22:30		AKITA	next day	5:05		○		○		○		○			○		○		○		○			○		○			○		○		○				
			TOMAKOMAI -HIGASHI	next day	16:45																																	
	AKITA		6:15	TOMAKOMAI -HIGASHI		16:45			○			○		○		○			○		○		○			○		○		○			○		○		○	

	Departure	time	Arrival	time		note	1	2	3	4	5	6	7	8	9	10	11	12	13	14	15	16	17	18	19	20	21	22	23	24	25	26	27	28	29	30	31
							Fri	Sat	Sun	Mon	Tue	Wed	Thu	Fri	Sat	Sun	Mon	Tue	Wed	Thu	Fri	Sat	Sun	Mon	Tue	Wed	Thu	Fri	Sat	Sun	Mon	Tue	Wed	Thu	Fri	Sat	Sun
South ward	OTARU	23:30	MAIZURU	next day	21:15			○			○		○		○			○		○		○			○			○			○		○		○		
		17:00	NIIGATA	next day	9:15				○		○		○			○		○			○		○			○			○			○		○			
	TOMAKOMAI -HIGASHI	17:00	NIIGATA	next day	9:15	direct route	○			○		○		○			○		○		○			○		○		○			○		○		○		
		23:30	MAIZURU	next day	21:15																										○						
		23:30	TSURUGA	next day	20:30	○	○	○	○	○	○	○	○	○	○	○	○	○	○	○	○	○	○	○	○	○	○	○	○	○	—	○	○	○	○	○	○
		19:30	AKITA	next day	7:35	indirect route		○			○		○		○			○		○			○			○		○			○		○		○		
			NIIGATA	next day	15:30			○			○		○			○			○			○			○			○			○		○		○		
			TSURUGA	two days later	5:30			○					○					○					○				○							○		○	
	AKITA	8:35	NIIGATA		15:30	○		○		○		○		○			○		○		○		○		○		○			○		○		○			
			TSURUGA	next day	5:30																														○		
	NIIGATA	16:30	TSURUGA	next day	5:30			○									○					○							○							○	

・“TOMAKOMAI-HIGASHI” is Tomakomai east Terminal , Syubun Pier.  
・There are cases where the ship and sailing schedule may be unavoidably changed.

# April Sailing Schedule

2024.4.1 ~ 2024.4.30  
( Plan )

	Departure	time	Arrival	time		note	1	2	3	4	5	6	7	8	9	10	11	12	13	14	15	16	17	18	19	20	21	22	23	24	25	26	27	28	29	30	
							Mon	Tue	Wed	Thu	Fri	Sat	Sun	Mon	Tue	Wed	Thu	Fri	Sat	Sun	Mon	Tue	Wed	Thu	Fri	Sat	Sun	Mon	Tue	Wed	Thu	Fri	Sat	Sun	Mon	Tue	
North ward	MAIZURU	23:50	OTARU	next day	20:45		○		○		○			○		○		○			○		○		○			○	○	○	○	○	○	○	-	○	
		23:50	TOMAKOMAI-HIGASHI	next day	20:30														○																		
	TSURUGA	23:55	TOMAKOMAI-HIGASHI	next day	20:30	direct route	○	○	○	○	○	○	○		○	○	○	○	○	-	○	○	○	○	○	○	○	○	○	○	○	○	○	-	○	○	
		9:30	NIIGATA		21:30	indirect route																															
			AKITA	next day	5:05		○																												-		
		TOMAKOMAI-HIGASHI	next day	16:45																																	
	NIIGATA	12:00	OTARU	next day	4:30	direct route			○		○		○				○		○		○		○		○	○	○			○	○	○	○	○		○	
		12:00	TOMAKOMAI-HIGASHI	next day	4:30			○		○		○				○							○		○												
		22:30	AKITA	next day	5:05	indirect route	○		○		○				○		○						○		○		○	○		○	○	○	○	○		-	○
			TOMAKOMAI-HIGASHI	next day	16:45																															-	
	AKITA	6:15	TOMAKOMAI-HIGASHI		16:45			○		○		○				○		○					○		○	○			○	○	○	○	○	○		-	

	Departure	time	Arrival	time		note	1	2	3	4	5	6	7	8	9	10	11	12	13	14	15	16	17	18	19	20	21	22	23	24	25	26	27	28	29	30
							Mon	Tue	Wed	Thu	Fri	Sat	Sun	Mon	Tue	Wed	Thu	Fri	Sat	Sun	Mon	Tue	Wed	Thu	Fri	Sat	Sun	Mon	Tue	Wed	Thu	Fri	Sat	Sun	Mon	Tue
	South ward	OTARU	23:30	MAIZURU	next day	21:15																														
17:00			NIIGATA	next day	9:15																															
TOMAKOMAI -HIGASHI		17:00	NIIGATA	next day	9:15	direct route																														
		23:30	MAIZURU	next day	21:15																															
		23:30	TSURUGA	next day	20:30																															
		19:30	AKITA	next day	7:35	indirect route																														
			NIIGATA	next day	15:30																															
			TSURUGA	two days later	5:30																															
		AKITA	8:35	NIIGATA		15:30																														
TSURUGA				next day	5:30																															
NIIGATA	16:30	TSURUGA	next day	5:30																																

•“TOMAKOMAI-HIGASHI” is Tomakomai east Terminal , Syubun Pier.  
•The ship and sailing schedule may be unavoidably changed .



May Sailing Schedule

2024.5.1 ~ 2024.5.31  
( Plan )

North ward	Departure	time	Arrival	time		note	1	2	3	4	5	6	7	8	9	10	11	12	13	14	15	16	17	18	19	20	21	22	23	24	25	26	27	28	29	30	31		
							Wed	Thu	Fri	Sat	Sun	Mon	Tue	Wed	Thu	Fri	Sat	Sun	Mon	Tue	Wed	Thu	Fri	Sat	Sun	Mon	Tue	Wed	Thu	Fri	Sat	Sun	Mon	Tue	Wed	Thu	Fri		
	MAIZURU	23:50	OTARU	next day	20:45			○	○	○	○	○		○	○	○	○	○			○		○				○		○		○								
		23:50	TOMAKOMAI -HIGASHI	next day	20:30																											○							
	TSURUGA	23:55	TOMAKOMAI -HIGASHI	next day	20:30	direct route	○	○		○	○	○	○	○	○	○	○	○	○	○	○	○	○	○	○	○	○	○	○	○	○		○	○	○	○	○		
	TSURUGA	9:30	NIIGATA		21:30	indirect route														○														○					
			AKITA	next day	5:05																		○											○					
			TOMAKOMAI -HIGASHI	next day	16:45																																		
	NIIGATA	12:00	OTARU	next day	4:30		○	○	○	○	○	○	○	○	○	○	○	○	○		○	○	○	○	○	○	○		○	○	○	○	○	○		○	○	○	○
		22:30	AKITA	next day	5:05		—	○	—	○		○	○	○	○	○	○	○		○	○	○	○	○	○		○	○	○	○	○	○		○	○	○	○	○	
TOMAKOMAI -HIGASHI			next day	16:45																																			
AKITA	6:15	TOMAKOMAI -HIGASHI		16:45		○		○		○		○	○	○	○	○	○	○		○	○	○	○	○	○		○	○	○	○	○	○		○	○	○	○		

South ward	発	発時刻	着	着時刻		備考	1	2	3	4	5	6	7	8	9	10	11	12	13	14	15	16	17	18	19	20	21	22	23	24	25	26	27	28	29	30	31	
							Wed	Thu	Fri	Sat	Sun	Mon	Tue	Wed	Thu	Fri	Sat	Sun	Mon	Tue	Wed	Thu	Fri	Sat	Sun	Mon	Tue	Wed	Thu	Fri	Sat	Sun	Mon	Tue	Wed	Thu	Fri	
	OTARU	23:30	MAIZURU	next day	21:15			○	○	○	○		○	○	○	○	○		○		○			○			○		○		○			○				
		17:00	NIIGATA	next day	9:15		○	○	○	○	●	○	○	○	○	○	○		○	○	○	○	○	○		○	○	○	○	○	○		○	○	○	○	○	
	TOMAKOMAI -HIGASHI	23:30	MAIZURU	next day	21:15														○													○			○		○	
		23:30	TSURUGA	next day	20:30	direct route	○	○		○	○	○	○	○	○	○	○		○	○	○	○	○	○	○	○	○	○	○	○	○		○	○		○		
		19:30	AKITA	next day	7:35		—	○	—	○		○	○	○	○	○	○		○	○	○	○	○	○			○	○	○	○	○	○		○	○	○	○	○
			NIIGATA	next day	15:30																																	
			TSURUGA	two days later	5:30		indirect route				○							○						○						○								
	AKITA	8:35	NIIGATA		15:30		○		○		○		○	○	○	○	○	○		○	○	○	○	○	○	○		○	○	○	○	○		○	○	○	○	
TSURUGA			next day	5:30						○								○							○													
NIIGATA	16:30	TSURUGA	next day	5:30						○								○							○						○							

・“TOMAKOMAI-HIGASHI” is Tomakomai east Terminal , Syubun Pier.  
・The ship and sailing schedule may be unavoidably changed .



Prescribed number of passengers: 600  
 Total length: 197.5 m    Total tonnage: 14,125 tons  
 Service speed: 25 knots  
 Vehicle capacity: 150 trucks, 22 passenger vehicles

〔 The ships 〕

Niigata ⇄ Otaru  
 route

Lavender  
 Azalea

## Cabins

### Suites

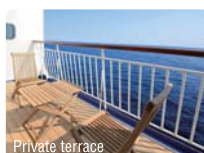
Twin

Cabins with both a private terrace and a bath with an ocean view.  
 You can enjoy a comfortable cruise in the ocean breeze.

**Facilities** Bath, bidet, washroom, television (broadcasting satellite compatible), DVD player, refrigerator, locker, safety deposit box and private terrace

**Items provided** Yukata, bath towels, bath robes, face towels, slippers, water boiler/thermos bottle, tea making set, hair dryer, soap, shampoo that contains conditioner, body soap, toothbrush, razor, tissues, shower cap, hair brush and ladies' kit (cotton swabs, cotton balls and hair elastics)

**Privileges** Meals included (Northward/ one lunch and one dinner, Southward/ one dinner and one breakfast) and free DVD rental



Private terrace



Bathroom



Twin

### Deluxe Room A

Twin, Japanese-style (capacity:2-3)

Feel a comfortable sea breeze in your bright room with a private terrace.

**Facilities** Bath, bidet, washroom, television (broadcasting satellite compatible), refrigerator, locker, safety deposit box and private terrace

**Items provided** Yukata, bath towels, face towels, slippers, water boiler/thermos bottle, tea making set, hair dryer, soap, shampoo that contains conditioner, toothbrush and tissues



Twin



Japanese-style room

### State Room A

Twin, Twin (Inside),  
 Twin&Japanese-style (capacity:4)

This room is perfect for families and groups.

**Facilities** shower stall, bidet, washroom, television (broadcasting satellite compatible), refrigerator and locker

**Items provided** Yukata, bath towels, face towels, slippers, water boiler/thermos bottle, tea making set, soap, tissues and toothbrush, hair dryer

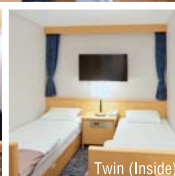
\*Twin (Inside) is windowless room.



Twin



Twin&Japanese-style room



Twin (Inside)

### Tourist S (Not a private cabin.)

This is a comfortable bedroom for one person with a television. Relax comfortably in the single-level bed (not a bunk bed).

**Facilities** Baggage rack, television    **Items provided** Bed covering, pillow, sheets



### Tourist A (berth)

These cabins are perfect for group trips with people you get along well with.

**Facilities** Baggage rack    **Items provided** Bed covering, pillow, sheets



Upper level



Lower level

### Tourist C (berth)

These cabins are perfect for group trips with people you get along well with.

**Facilities** Baggage rack    **Items provided** Blanket, pillow, sheets



Upper level



Lower level

Guest cabins and common areas are all nonsmoking. Only smoke in designated areas.

Note: The photos are for illustrative purposes only.



# Inboard facilities



**Grill**

Offers cruise lunches and dinners made with carefully selected ingredients from Hokkaido, the Sea of Japan and elsewhere.  
(Note: By reservation. Open April to October.)



**Entrance**



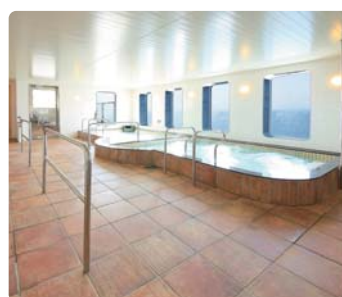
**Restaurant**

Get your fill of delicious meals while on board the ship.



**Cafeteria**

Soft drinks and snacks are available for passengers to enjoy.



**Grand bath (with sauna)<sup>\*1, \*2</sup>**

Enjoy a luxurious time while gazing at the horizon.



**Open air bath<sup>\*2</sup>**

This is an exceptional bathing experience of gazing at the grandeur of the ocean and sky while exposed to the breeze from the Sea of Japan.



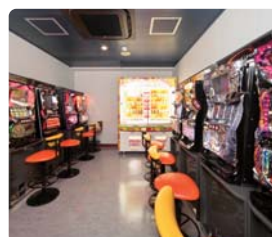
**Sauna<sup>\*2</sup>**

A sauna so authentic you wouldn't know it was on a ship. Work up a good sweat and refresh your spirits!



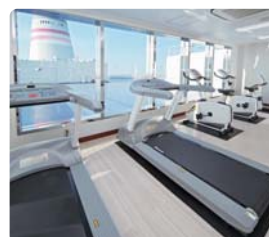
**Forward saloon<sup>\*3</sup>**

Passengers can look out on the endless sea from this reception room with a view on the front of the boat.



**Games room**

This is an amusement arcade full of fun games.



**Sports room**

Refresh your spirits through physical exercise!



**Amusement box<sup>\*4</sup>**

Enjoy watching DVDs or karaoke with your friends.



**Kids' room**

Small children will not get bored here.



**Shop**

This shop offers a selection of original goods and souvenirs.



**Dog field<sup>\*5</sup>**

If you brought your pet with you, we've got you covered! This is a space where you can relax and play with your dog.



**Barbeque garden<sup>\*6</sup>**



**Open deck**



**Information desk**



**Vending machines**



**Maritime telephone<sup>\*7</sup>**



**Laundry**



**Smoking room**

<sup>\*1</sup> There are body soap, shampoo containing conditioner, hair dryers and refundable 100-yen coin lockers available. Also, towel sets are available for rental (300 yen) at the information desk.

<sup>\*2</sup> People with tattoos are not allowed to use.

<sup>\*3</sup> The saloon may not be used to enjoy the view during the winter and during stormy weather.

<sup>\*4</sup> Passengers can watch DVDs or sing karaoke. When singing karaoke, the price is 1,000 yen per hour for a 2-3 person room. There is a deposit of 1,000 yen. It is 3,000 yen per hour for a 5-6 person room with a deposit of 2,000 yen. The deposit will be refunded to you after the microphone and other equipment are returned. When watching a DVD, the price is 1,000 yen per room (500 yen to rent one DVD and a deposit of 500 yen). The deposit will be returned when the DVD is returned.

<sup>\*5</sup> Closed during winter (November to March)

<sup>\*6</sup> Open only during the summer.

<sup>\*7</sup> The maritime telephone is operated with 100 yen coins.

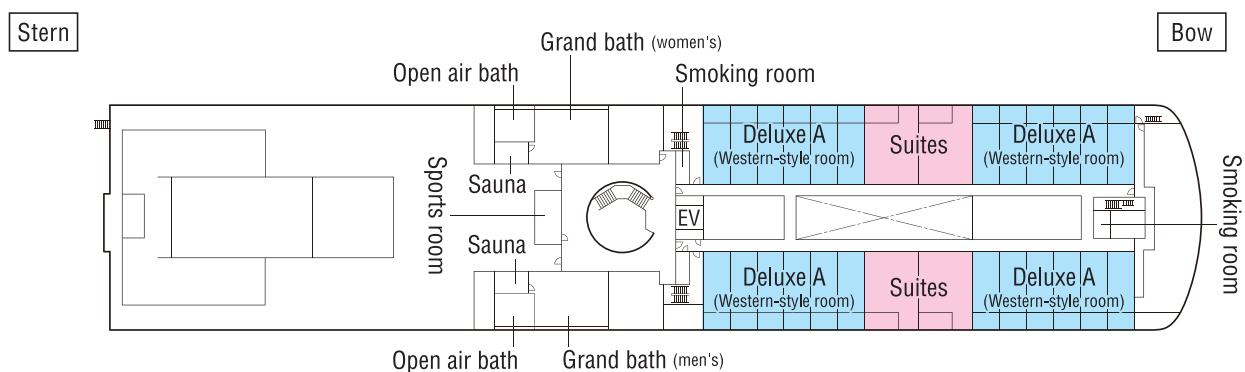
Niigata ⇄ Otaru  
route

Lavender

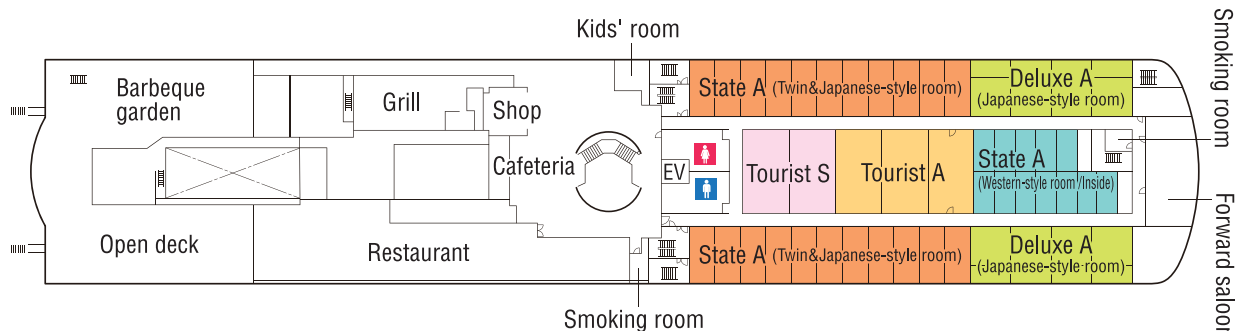
Azalea

# Deck plan

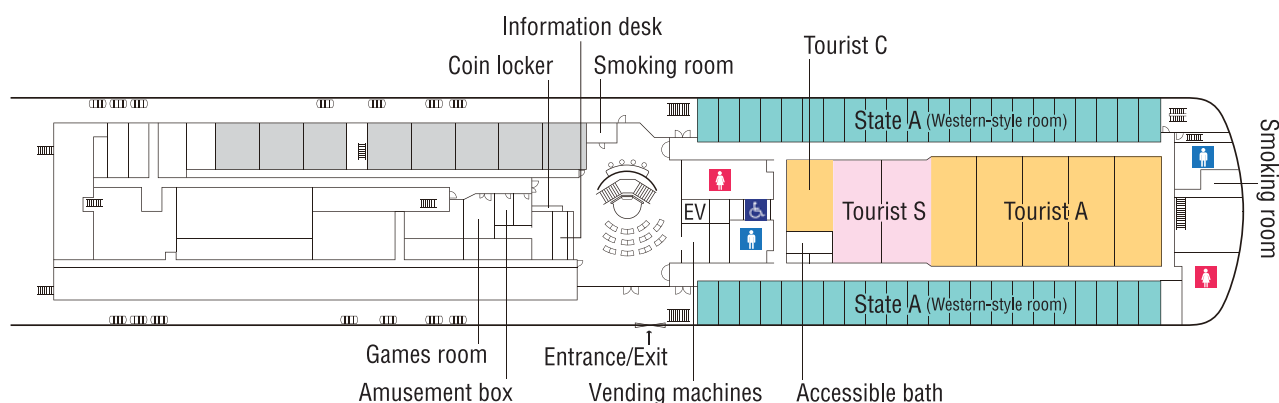
6F



5F



4F



Restroom (men's) Restroom (women's) Accessible restroom